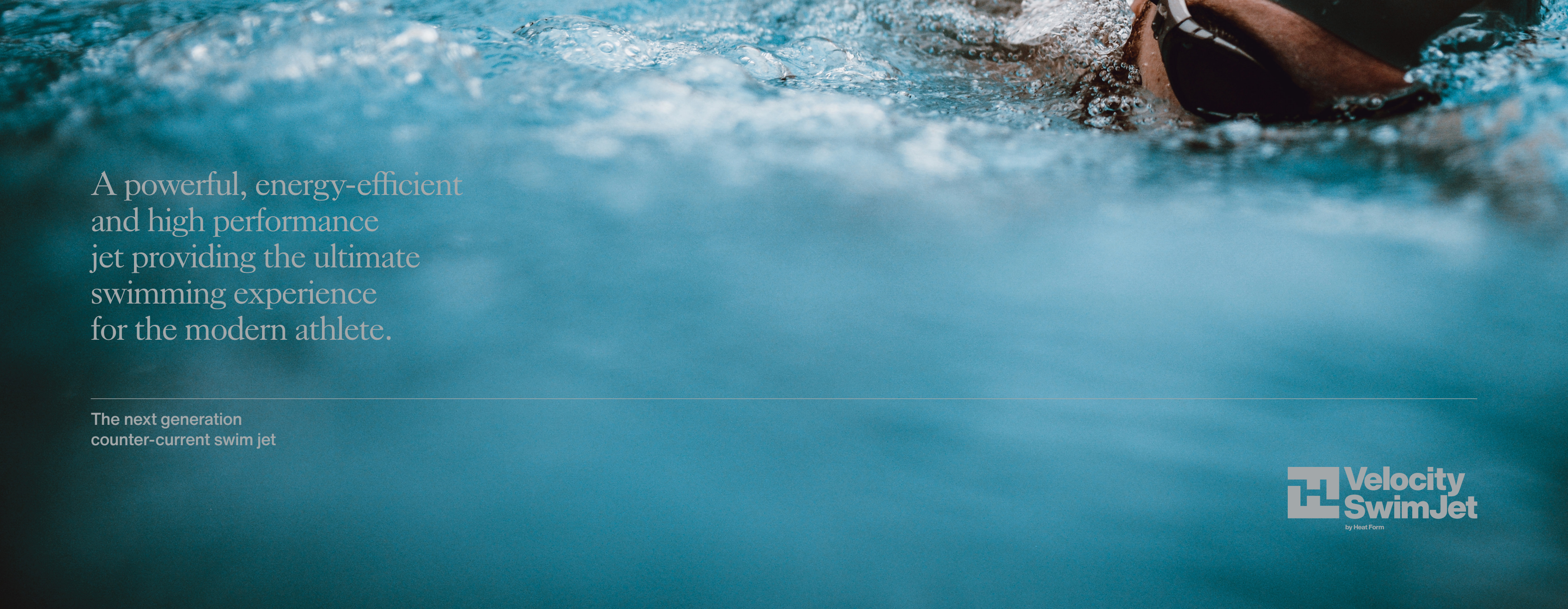


Velocity  
Swim Jet

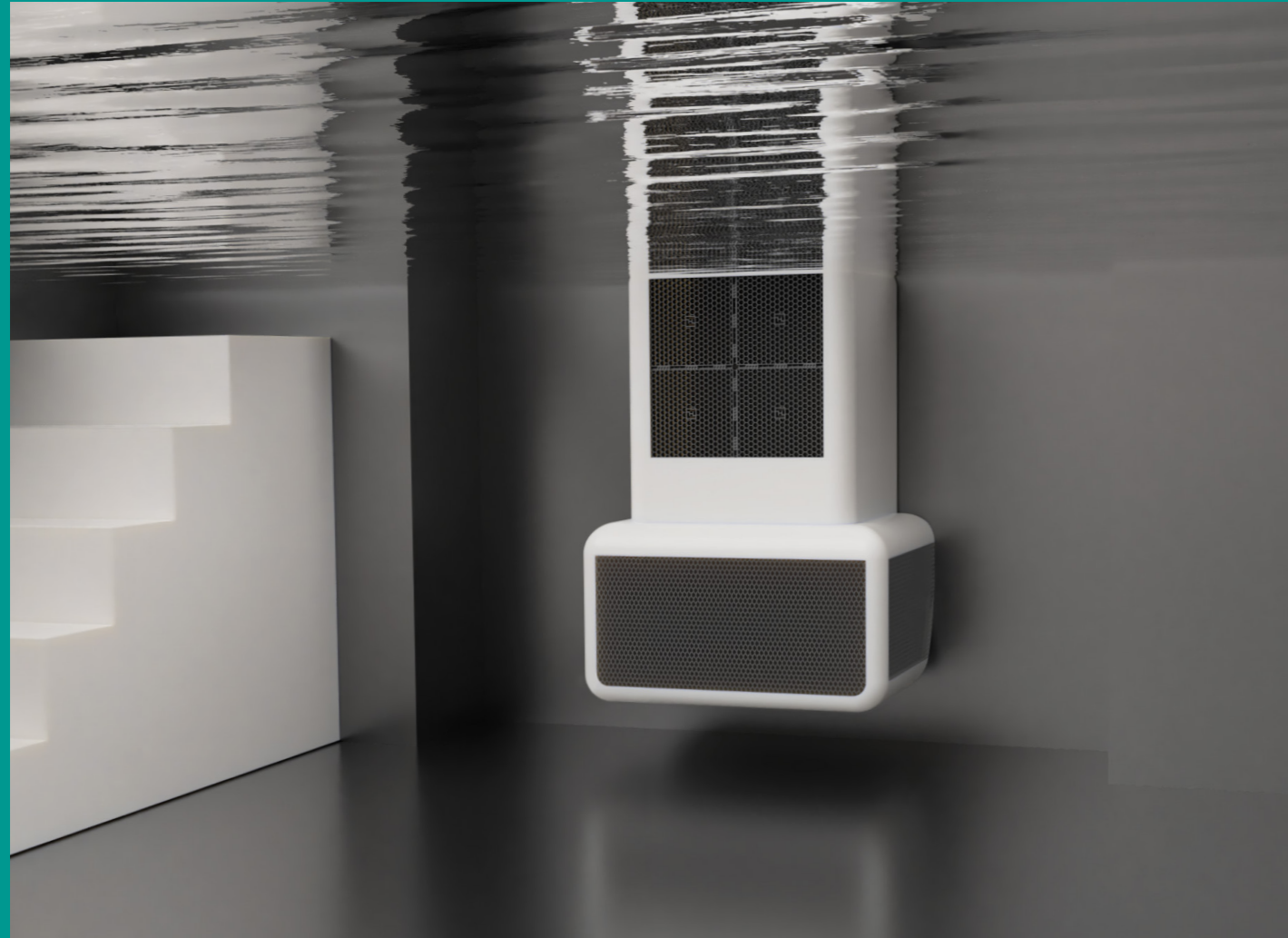


A powerful, energy-efficient  
and high performance  
jet providing the ultimate  
swimming experience  
for the modern athlete.

---

The next generation  
counter-current swim jet

 **Velocity  
SwimJet**  
by Heat Form



## Velocity Swim Jet by HeatForm

---

Velocity is the next generation in counter-current swimming machines. Designed and manufactured in the UK by HeatForm, Velocity has been created after years of research and development to produce the most powerful and pleasant resistant-swimming experience.

---

Utilising unique hydraulic technology, the Velocity swim jet is able to provide power to the pool unrivalled by any existing electric drive system. Working in partnership with cross channel swimmers, triathletes and many other swimming professionals, we have created the ultimate current-like and fully adjustable jet flow stream, suitable for all levels of ability.

By incorporating the latest inverter technology within the swim jet, it enables the highest possible power

whilst reducing the running costs and noise, traditionally seen with similar systems.

Velocity is the first and only swim jet manufactured in the UK, and is in keeping with the HeatForm philosophy of innovative products with a reduced carbon footprint. This not only helps the environment but also reduces the costs to you, the consumer.

---

---

Home is where the pool is;  
swim where you like,  
when you like.

---

Swimming continues to be one of the most popular physical activities and its benefits to both mental and physical health are well known. Increasingly, many people are choosing to exercise at home for their own comfort and convenience and the Velocity swim jet provides an excellent solution for anyone looking to either transform their existing pool into an aquatic workout area or integrate the system into a brand new pool build.

For the serious swimmer looking to boost their performance it eliminates the gym commute and the constraints of pool opening times as well as the need for lap work and flip turns opening up the ability to concentrate fully on stroke fluency. Turn down the current, with the simple touch of a button, and the pool becomes a more gentle swim experience for relaxed swimmers and not to mention a brilliant toy for the kids!

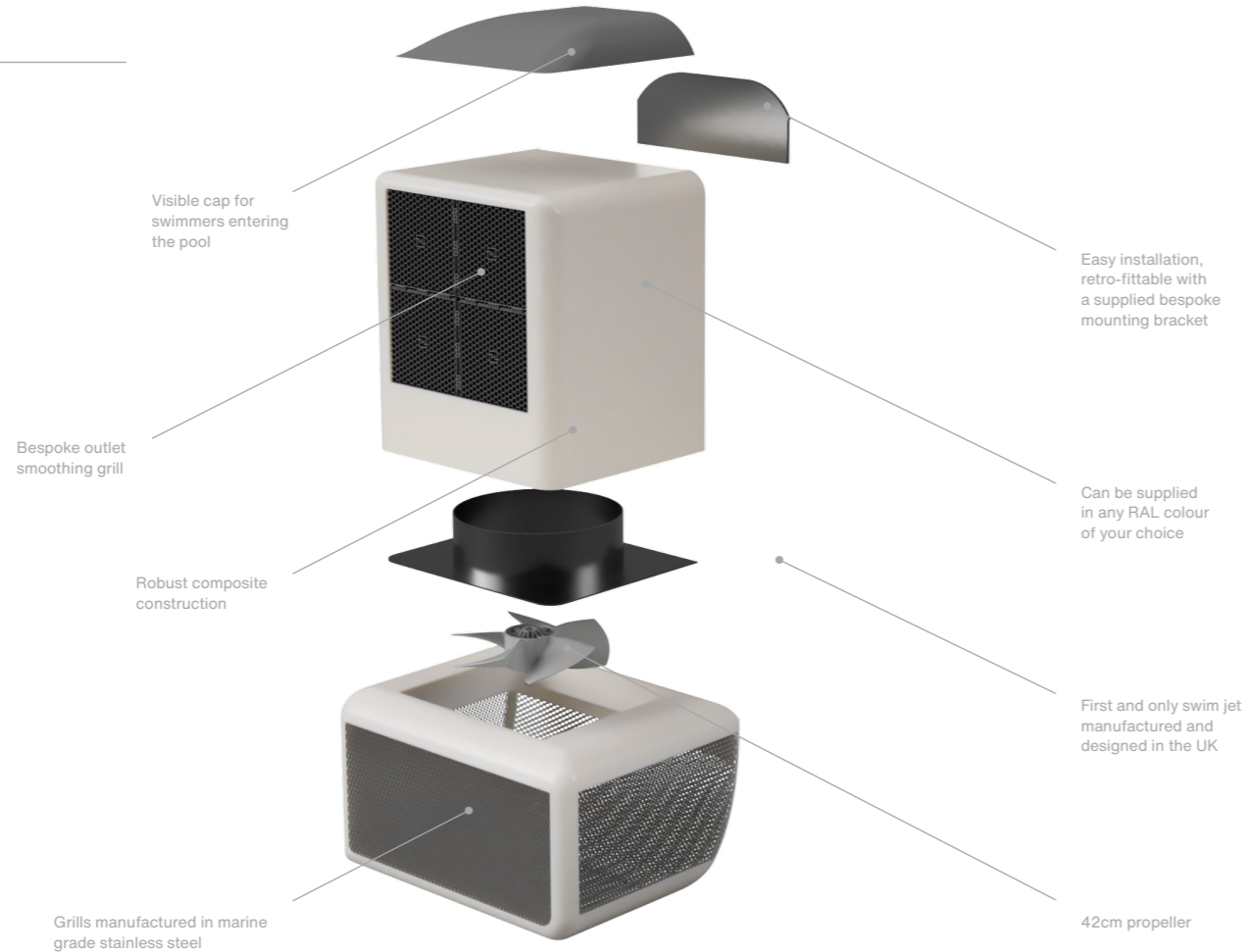


## Velocity – The Jet

Velocity is a hydraulically driven swim jet with several unique design features that set it above and apart from its competitors.

At its heart, Velocity is powered by a 4kW 5hp inverter driven motor. This motor has been designed to utilise the latest in inverter drive technology to give a fully variable and adjustable swimming experience.

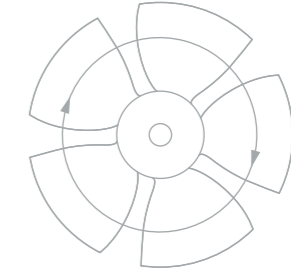
By using a modern inverter system the Velocity power pack regulates the speed of the motor to adjust the flow of biodegradable hydraulic oil to the main head unit. This is different to other, older systems which require the motor to run constantly at full speed with the flow being regulated by a by-pass valve.



### WHAT DOES THIS ACTUALLY MEAN?

The result of using the inverter drive is a quieter, more cost effective system which is much more suited to installation in a European domestic environment. Simply put, inverter technology works on the principle of variable motor speed, the lower the speed – the lower the power consumption and increased saving to your electricity bill. A win for both the consumer and the environment.

To make life easier, Velocity only requires a standard 20 amp single phase electrical supply to power the 4kW 5hp motor.



### HOW POWERFUL IS THE RESULTANT WATER FLOW?

The Velocity power pack, installed within the pool plant room, provides over 100bar of hydraulic power to the unique head unit situated in the pool. A 42cm propeller developed in conjunction with the UK's finest powerboat designers generates a perfect flow. The water is then pushed and straightened through the custom designed HeatForm grid system, resulting in a swimming experience second to none.

## Power and Performance

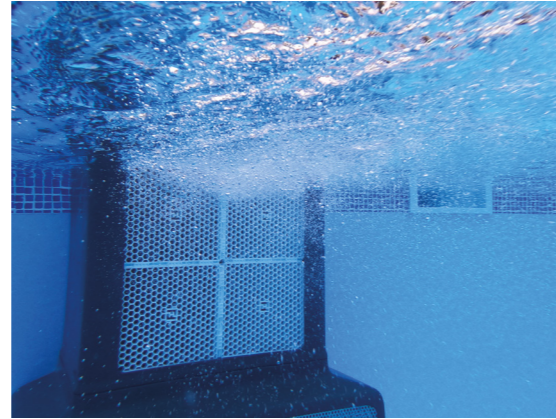
The Velocity swim jet has been created with performance at the forefront. It has been tested extensively by swimmers of all abilities from children and casual dippers through to professional, elite athletes. Whether you swim to compete, for pleasure or to just to stay fit, Velocity's easily adjustable flow rates enable everyone to jump in and lose themselves swimming against the current.

The flow of water at all speeds is smooth, wide and deep giving the feel of your full body swimming in a river current which results in a more natural swimming experience than the more concentrated jet systems found in pump powered swim spas.

The speed is fully adjustable via either the main control box or included ip68 waterproof remote control and comes with 10 pre-programmed levels which can be also be adjusted within 2% increments to create the exact level of flow you desire. The main drive system also has an in-built LED display showing your flow rate at any given time, to assist with a consistent training programme.

The highest level of water flow achievable is 58 seconds for 100m, suitable for an elite swimmer.

Top — Velocity Swim Jet  
Bottom — Remote control unit

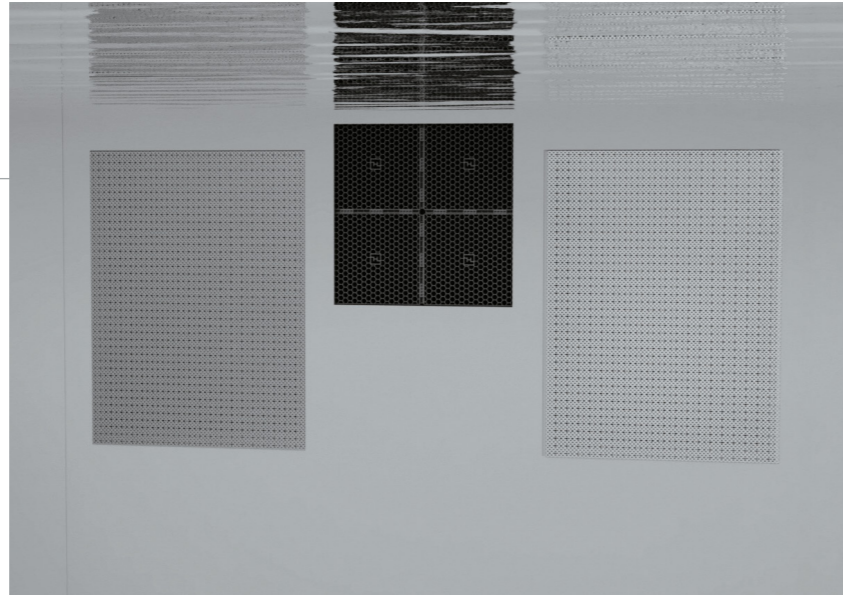


Triathlete training with the Velocity Swim Jet



## Installation and Aesthetic

Designed with flexibility in mind, the Velocity swim jet is easy to install and fits on almost any pool; free-form or rectangular, vinyl or fibreglass, concrete or liner, in-ground or above-ground. There are two options for installation.



### HIDDEN

Velocity can be installed behind its own bespoke cover panel giving a clean and unfussy finish to the pool. The advantage of installing a Velocity in a hidden recess with a cover panel means you get the most out of your pool by maximising the swim area. The hidden version is the ultimate in performance and luxury for any pool.

The cover panels made in Devon by the HeatForm team are available in various colour options or can be tiled to match the chosen pool finish. The suction grills are designed to safely maintain flow levels and are manufactured in marine grade 316 stainless steel.

Velocity Swim Jet with cover panels



### STANDARD OR RETRO-FITTABLE

This system comes with all the components necessary to fix the unit to the pool wall, showing off the sleek design and giving a quick and easy upgrade to any new or existing pool. The unit comes with a bespoke mounting bracket.

The Velocity comes in two standard colours – Anthracite Grey and Light Grey. However, due to its unique composite structure, it can be supplied in any RAL colour of your choice for a small price supplement.



The above swatches are as close an approximation of the actual colours; Anthracite Grey (RAL 7016) and Light Grey (RAL 7035).





## Why choose a Velocity Swim Jet?

The Velocity swim jet by HeatForm has been created to become the best performing swim jet on the market using the latest in modern power and composite technologies. This combination has resulted in the ultimate swimming experience provided by a unique system designed with energy saving at the forefront.



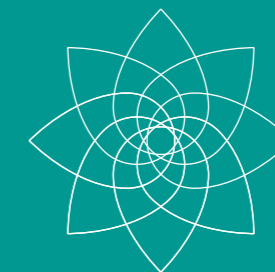
MAXIMUM SWIM PACE -  
58 SECONDS FOR 100 METERS

### LOW RUNNING COSTS



The heart of the Velocity swim jet is the hydraulic power pack which is powered by the HeatForm inverter drive system. This energy efficient motor in turn powers the generously sized 42cm propeller, which when running on anything other than full speed, saves extensively on running costs and noise pollution.

### COMPATIBILITY



Thanks to the innovative encasement of the internal pool motor, the Velocity swim jet is compatible with all types of pool water treatment including salt water pools up to 3ppm.

### DURABILITY



By not running the motor at full speed all the time, thanks to the variable control system, the lifetime of the components is naturally extended compared to a motor running at full speed all the time.

### ENERGY EFFICIENT



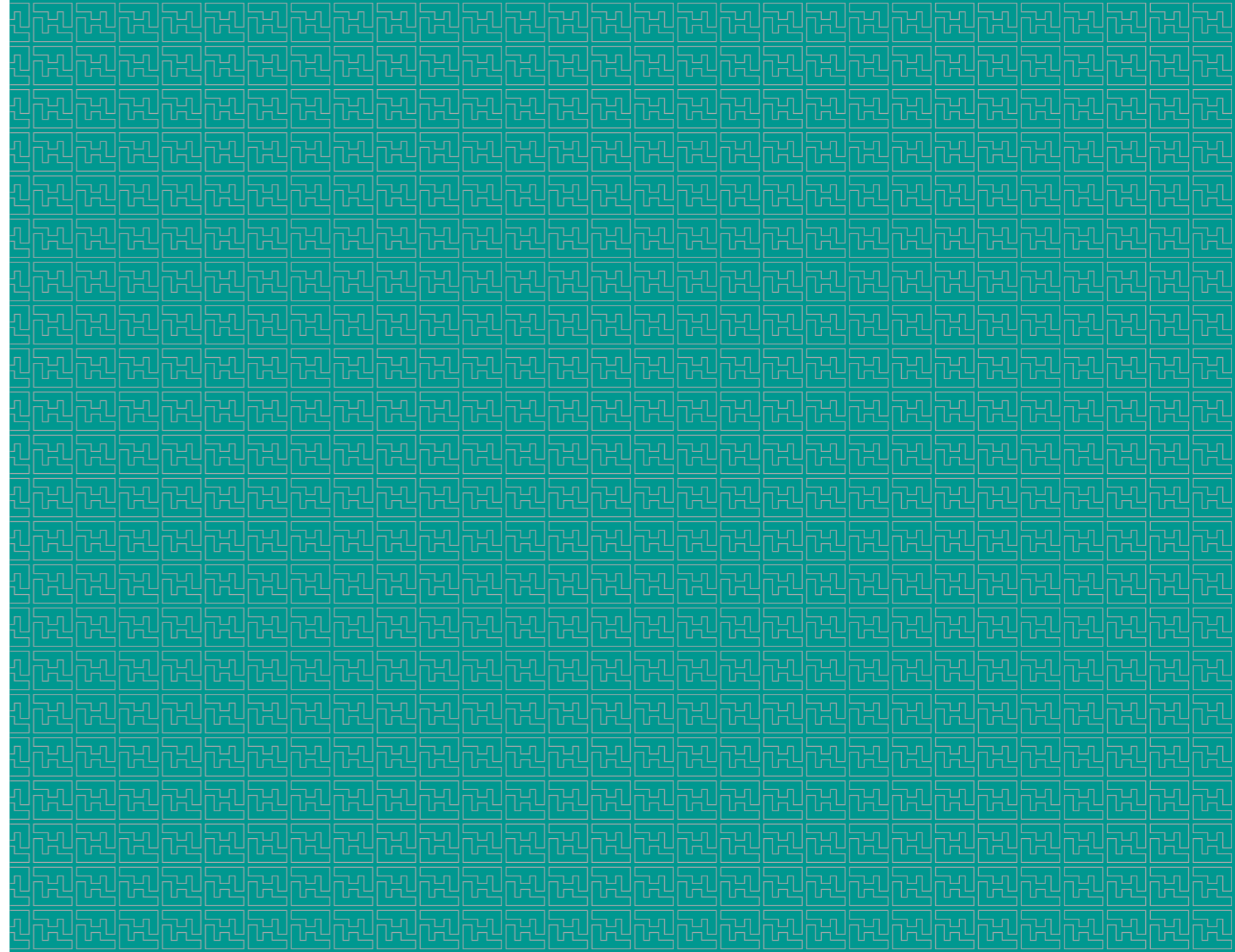
The Velocity swim jet's energy efficient design falls in line with the overriding ethos of the HeatForm brand – to bring to market, freshly-engineered, eco-friendly product designs that are unashamedly high end and high performance.

**VELOCITY  
COMES WITH  
A 3-YEAR  
WARRANTY**



“I’m delighted to have been involved in the development of the new Velocity Swim Jet. It is, without doubt, one of the best jets I have trained with and was invaluable in the run up to my recent cross channel swim. Velocity is a powerful and high performance jet which is going to make a big impact in the UK swim scene.”

**JASON QUITERIO,**  
PROFESSIONAL SWIM COACH, ACE SWIMMING





If you feel ready to take the plunge and invest in a HeatForm Velocity Swim Jet please visit our website and fill in an enquiry form or get in touch with your local dealer.

+44 (0)1752 25 35 25  
sales@hf-velocity.co.uk

Unit 7 Meadow Close  
Langage Industrial Estate  
Plymouth Devon PL7 5EX  
United Kingdom

[hf-velocity.co.uk](http://hf-velocity.co.uk)

Design by [jamesedgarstudio.com](http://jamesedgarstudio.com)

Printed by [orchidprint.com](http://orchidprint.com)

Cover printed on Colorplan Marrs Green by G.F Smith.  
Text printed on Munken Design Polar Smooth Crisp White.  
FSC Certified, 100% Virgin ECF Fibre and Acid-Free.

