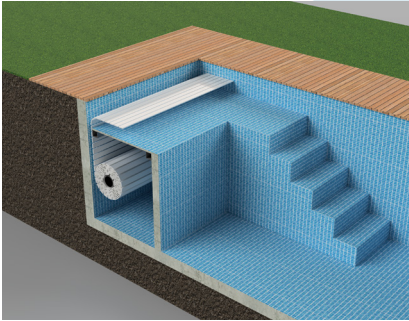




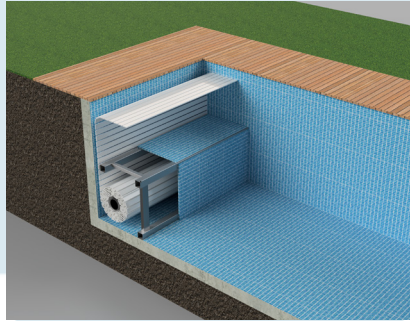
- ◇ In- Pool Slatted Cover System
- ◇ 250nm and 500nm in-roller motors
- ◇ 6 installation options
- ◇ Wide range of slat colours
- ◇ Remote control as standard
- ◇ Polycarbonate and PVC Slats
- ◇ UK Designed and Manufactured - by HeatForm
- ◇ 3 year system warranty
- ◇ Made to measure

HeatForm® Pool Covers

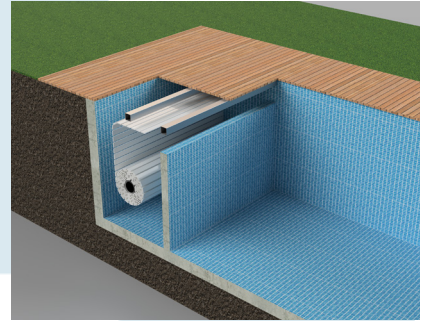
The Tidal Range of in-pool slatted covers



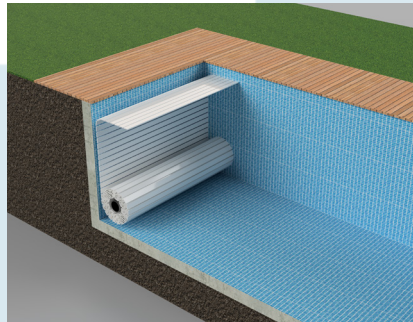
HF Tidal Beach



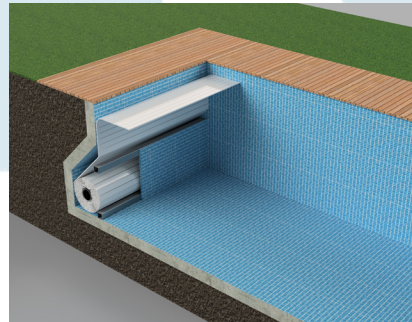
HF Tidal Bench



HF Tidal Classic



HF Tidal Simple



HF Tidal Cave



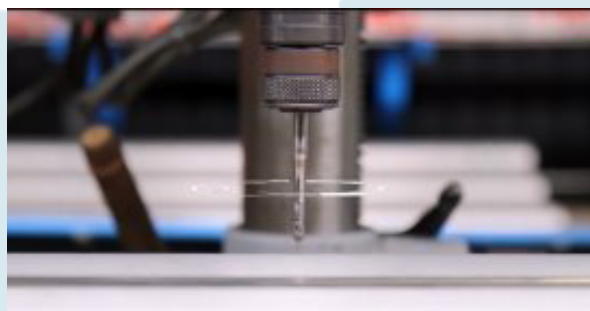
HeatForm® Pool Covers

The HF Tidal In-Ground Motor System

Following over 15 years of service in the field, the in-roller motor, used by HeatForm, has proven to be extremely reliable and efficient. With its clever use of nitrogen rather than resin to waterproof the mechanical components, it continues to be at the front of the market for innovation.

As the motor is fitted directly into the cover roller, there are no moving parts housed outside of the pool, ensuring minimum space requirements outside of the pool perimeter. The roller itself is immersed in the pool and supported by bracketry on both sides bolted to the pool structure. The cable from the motor passes through the pool shell and is covered in a plastic sleeve for additional protection.

The fully automated cover system is operated simply using a key switch or remote control. The motor comes in 250Nm and 500Nm torque variations, allowing for a wide range of pool sizes and depths and is provided with a 5 year manufacturer warranty.

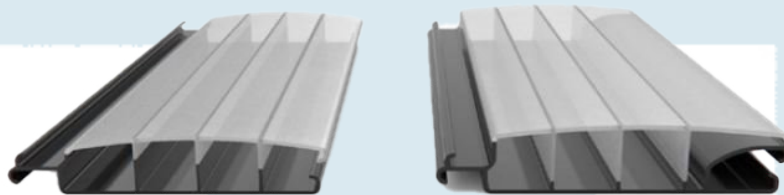


HF SLAT OPTIONS

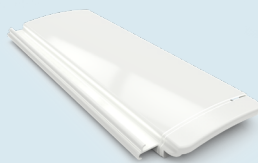
HeatForm offers 2 different slat types, the standard profile 60x14mm with 3 closed air chambers and the premium profile 67,5x16,5mm with 4 closed air chambers. The standard profile is available in PVC and polycarbonate. The premium profile is exclusively available in PC solar and aluminum look.

A high quality pool cover slat is characterized by its lifespan. The wall thickness of the profile is directly linked to the sustainability of the slat. Furthermore the quality of the raw material is decisive as well as the shape of the profile. The design of the slat determines to a large extent the stiffness and resistance to shock of the pool cover profile.

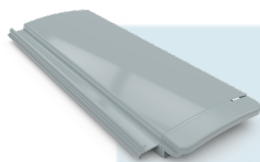
INSULATION VALUES OF THE HEATFORM SLATS:



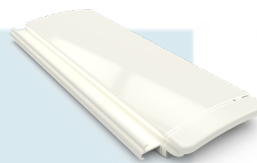
- Standard profile 60x14mm : $U = 4.55 \text{ W/m}^2\text{K}$
- Standard profile 67.5x16.5mm : $U = 3.80 \text{ W/m}^2\text{K}$



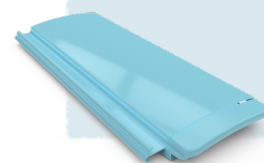
White PVC



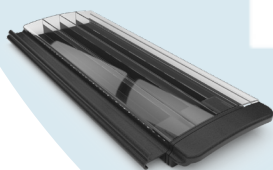
Grey PVC



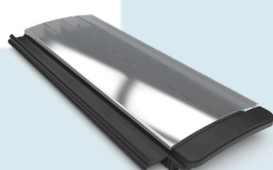
Beige PVC



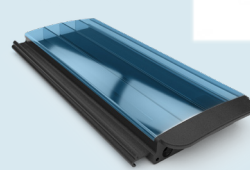
Blue PVC



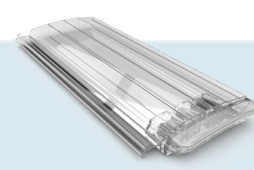
Solar PC



Alu PC



Blue PC - Premium



Transparent PC - Premium

Available exclusively from:

LIGHTHOUSE
The Independent Specialist Distributor

www.lighthousepools.co.uk
sales@lighthousepools.co.uk
01752 253525