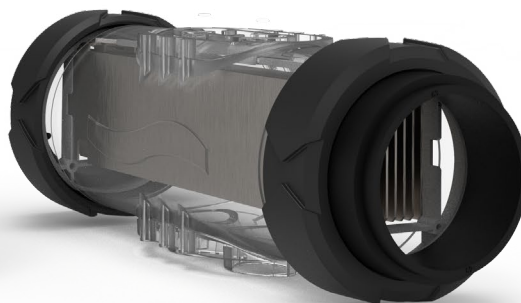




BENEFITS

- Intuitive navigation on backlit LCD display
- In line or dashboard display
- Adjustable chlorine production from 0 to 100%
- Low Salt / Normal Salt mode (depending on model)
- High quality self cleaning cell
- Bluetooth remote control with e-Pool® app
- Transparent accessories holder



FEATURES

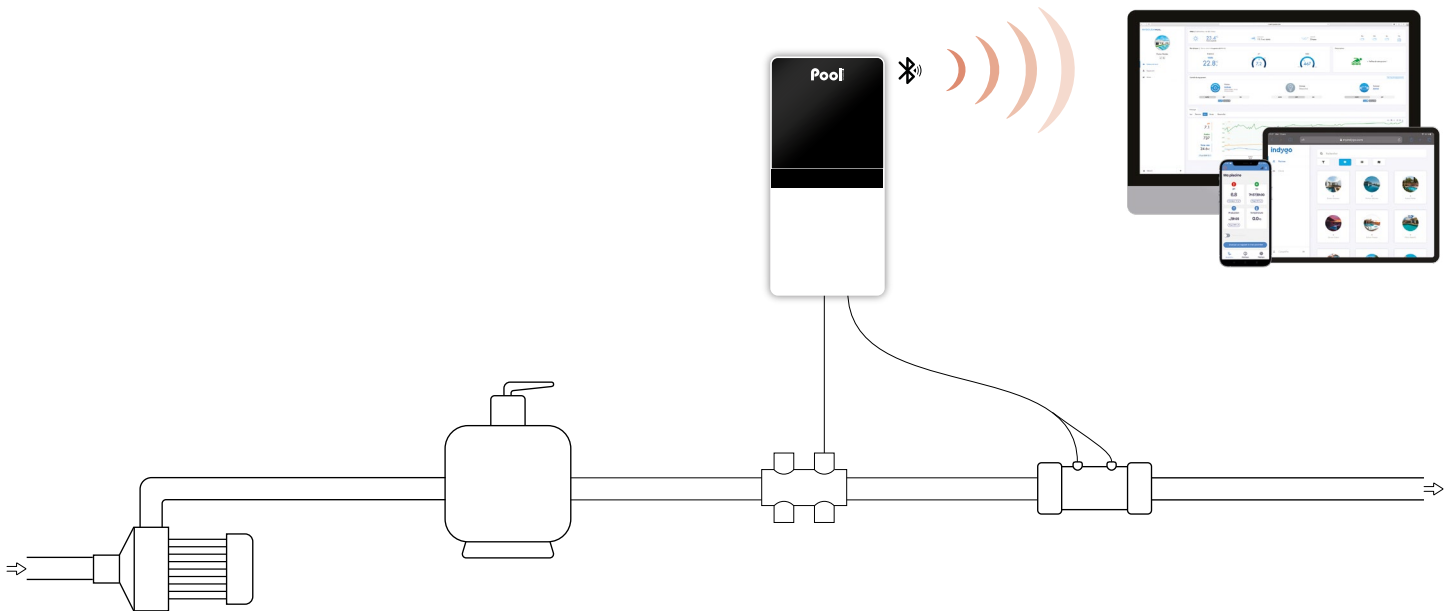
- **Smart Power:** current monitoring ensuring stable production
- **Self-cleaning cell with memory polarity inversion,** adjustable according to water hardness
- **Operate at any salt level from 2,5 g/l (NS) and 1,5 g/l (LS)** without high limit
- **Superboost mode:** 125% superchlorination for up to 24 hours to overcome an increased need of disinfectant
- **Low mode to reduce chlorine production,** when cover closed or bubbles cover installed
- **Multilingual alarm message:** written message display of malfunction cause
- **Automatic winterization and restart from 15°C**
- **Display of pool salt level, water temperature and cell lifespan**
- **Self-diagnosis programme for easy maintenance**
- **Log of events**
- **Easy installation and assembly**

Model	Pool volume* (m ³)	Chlorine production (g/h)	Reference
Justsalt 8	40	8	ELLY20NPSA-G4NM08
Justsalt 12	60	12	ELLY20NPSA-G4NM12
Justsalt 16	NS 80 / LS 60	NS 16 / LS 12	ELLY20NPSA-G4HX16
Justsalt 23	NS 120 / LS 80	NS 23 / LS 16	ELLY20NPSA-G4HX23
Justsalt 30	NS 160 / LS 120	NS 30 / LS 23	ELLY20NPSA-G4HX30

*In hot climates, reduce the volume by 20% - NS : Normal Salt (5 g/l) / LS : Low Salt (1,5 g/l)

Technical specifications	
Display	LCD 2 lines
Polarity inversion adjustment	from 2h to 24h in increments of 1h
Cell installation	in line
Cell orientation	horizontal or vertical
Cell length (mm)	225
Maximum pressure in the cell (bar)	2
Maximum flow in the cell (m ³)	22 or By-pass
Maximum water temperature (°C)	40
Control panel size (mm)	W 140 x H 300 x D 97

INSTALLATION DIAGRAM



CONTENT

- Control box
- Chlorination cell
- Cell cable (2 m)
- Low water/salt/temperature sensor
- Accessories holder with plugs
- Salt and water hardness analysis kit
- Power cable (2 m)
- Collar \varnothing 63 mm x2
- Reducer \varnothing 63/50 mm x4
- Wall support (with screws)
- User manual

OPTIONS

- Grounding electrode
- Independent flow switch
- e-Pool[®] Connect Connected Pool kit
- Collar \varnothing 50 mm x2

WARRANTIES

2 years Box

2+2 years Cell

* See a retailer