



INTEGRATED PARTS STAINLESS STEEL

Skimmer | Inlet nozzles
Wall ducts | Floor drains | Light | Accessories

HARMONIC POOL DESIGN

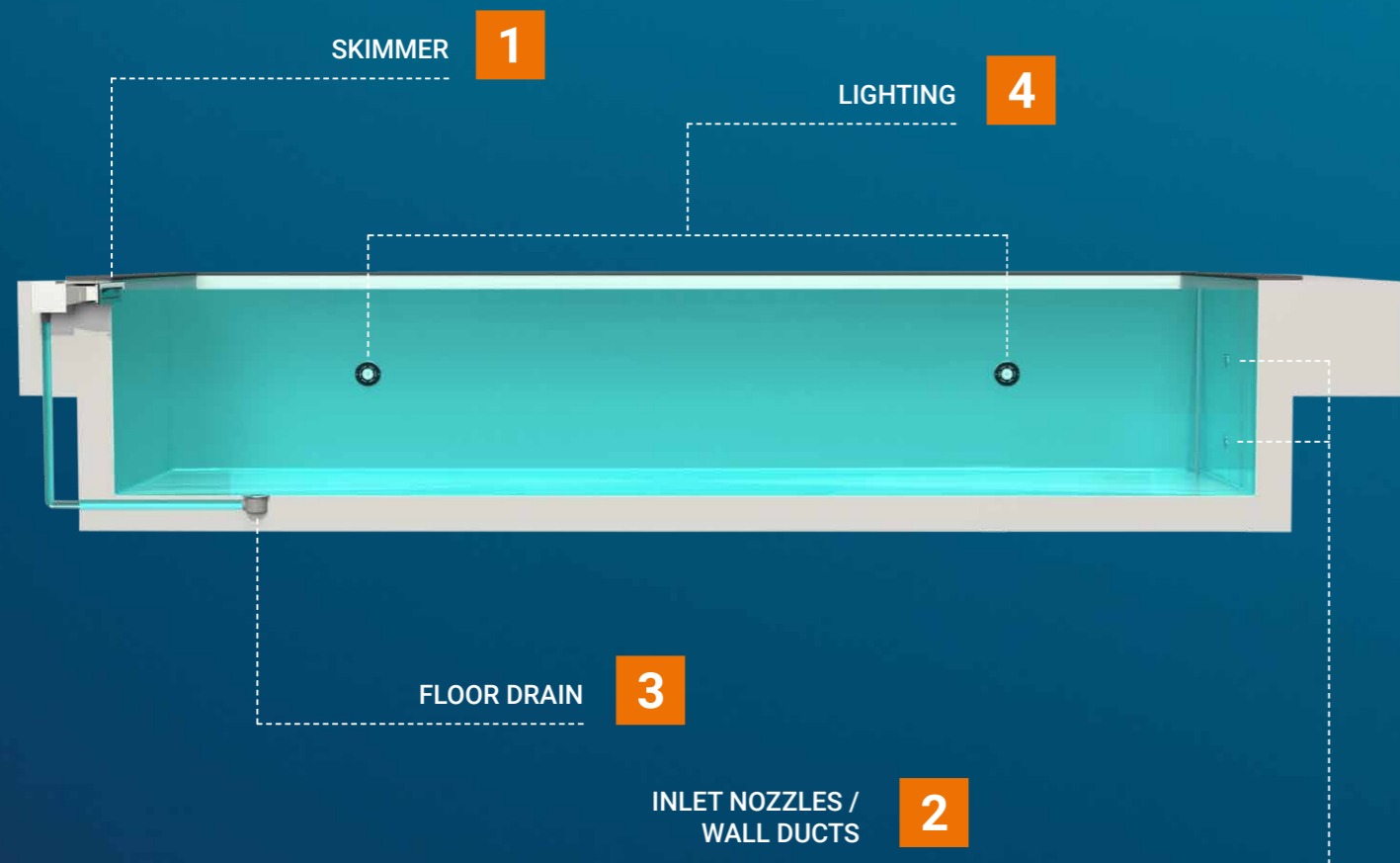
ALL THE WAY TO THE BOTTOM OF YOUR POOL – BEHNCKE INTEGRATED STAINLESS STEEL PARTS.

Charles Eames, American design legend, knew: “details make design”. BEHNCKE transferred this principle to integrated parts made from stainless steel. Produced in our in-house manufacture near Munich, they are real winners not only from a visual point of view. BEHNCKE starts off with high-quality AISI 316 stainless steel as raw material, which makes our products extremely durable and robust.

Swimming pools have various neuralgic spots when it comes to functionality. Inlet nozzles, floor drains and skimmers ensure an ideal flow for absolutely clean water.

Our stainless steel built-in parts are inspired by nature and comply with the latest safety aspects of DIN EN 13451-3:2022-10. We have taken our inspiration from the world of fractals and the golden section to achieve beauty of the form for our inbuilt parts. In combination with our complete aquavision® water treatment we offer full safety below the waterline and in the water. Trust in our quality and be animated by the beauty of nature.

All BEHNCKE integrated parts are available in a round shape or a CUBE Line design.



Illustrated example of a skimmer pool



1 SKIMMER For a shiny pool

The skimmer cleans the water surface, and together with the floor drains, ensures ideal water circulation and perfect water quality in the pool. A large size strainer reliably catches dirt particles such as leaves.

2 INLET NOZZLES / WALL DUCTS For the right flow

Choosing the right quantity, size and best positions of the inlet nozzles in your pool ensures an ideal flow, making it an important component for pool water treatment.

3 FLOOR DRAINS So stylish and safe

In combination with the skimmer, the floor drains take care of discharging the water from the pool. An optimum water circulation maintains a continuously perfect water quality.

4 UNDERWATER SPOTLIGHTS So illuminating

Besides the traditional PAR 56 light we offer the economical BEHNCKE LED. We offer a manufacturer's guarantee of four years. Applicabel in any pool size as Daylight White, Warm White or in RGBW version-multi-coloured.

SKIMMER

FOR A SHINY POOL. COMBINING FUNCTION AND DESIGN.

Our skimmers made in Germany impresses not only with their function but also their design and longevity from the use of high quality AISI 316 stainless steel as a raw material. The skimmer cleans the water surface, and with the floor drains, ensures ideal water circulation and perfect water quality in the pool. A large size strainer reliably catches dirt particles such as leaves, making skimmers an enormously important component of pool water treatment.

BEHNCKE offers compact models for small and inexpensive pools, exclusive models with integrated front strainer basket for large pools and surface Skimmers with extended installation depth for wide pool edges. If the client wishes a high water level near the overflow pool, BEHNCKE's B500 / B600 Ultimate sets new standards for skimmers.

We have currently expanded our range with the B400 EVO and the B400 Ulitmate.



Skimmer B050 / B075



SMALL POOLS

The dwarf for small pools.

Thanks to its small and compact design, they are ideal for the smallest pools with their own volume flow.

Skimmer B100 / B200



STANDARD MODEL

Practical function with attractive pricing.

These skimmers have a simple and compact design, making them particularly suitable for small and cost-efficient pools.

Skimmer B280 / B300 / B400 EVO / B500 EVO / B600 EVO



WITH STRAINER INSERT

Front slide-in unit for a flawless pool border.

Due to its large suction opening and the exclusive construction this surface Skimmer is used for larger pools. Integrated directly in the skimmer the front strainer insert - there is no service opening needed in the pool surrounding.

Skimmer B400



EXTENDED INSTALLATION DEPTH

The ideal solution for wide pool rims.

This skimmer has an extended depth of 30 cm. It has an additional water chamber with a weld-in holder for installing a water level regulator.

Skimmer B400 Slim / B500 Slim / B600 Slim / B400 Ultimate / B500 Ultimate / B600 Ultimate



HIGH WATER LEVEL

New benchmark for water levels.

B400 Slim, B500 Slim and B600 Slim enable high water levels in the pool. B500 / B600 Ultimate sets a new standard for water levels. The result? A water line that is very close to the overflow pool at maximum circulation output.

Guaranteed high water level due to narrow mouth opening

SPECIFICATIONS

Skimmer

Type	Skimmer type	Throughput	Connection size	Skimming width	Skimming height	Max. water level
B050	Small pools	2 - 3 m³/h	1 ½"	151 mm	71 mm	50 mm
B075	Small pools	5 - 6 m³/h	2"	150 mm	142 mm	80 mm
B100	Standard	8 - 12 m³/h	2"	200 mm	142 mm	100 mm
B200	Standard	10 - 15 m³/h	2"	200 mm	142 mm	100 mm
B280	With slide-in unit	6 - 10 m³/h	1 ½"	200 mm	145 mm	85 mm
B300	With slide-in unit	12 - 20 m³/h	2"	300 mm	217 mm	100 mm
B400 EVO	With slide-in unit	6 - 10 m³/h	2"/2 ½"	335 mm	85 mm	30 mm
B500 EVO	With slide-in unit	8 - 15 m³/h	2"/2 ½"	460 mm	85 mm	55 mm
B600 EVO	With slide-in unit	13 - 25 m³/h	2"/2 ½"	665 mm	85 mm	55 mm

Type	Skimmer type	Throughput	Connection size	Skimming width	Skimming height	Max. water level
B400	Extended installation depth	10 - 15 m³/h	2"	200 mm	145 mm	100 mm
B400 Slim	Narrow mouth	6 - 10 m³/h	2"/2 ½"	335 mm	84 mm	55 mm
B500 Slim	Narrow mouth	8 - 15 m³/h	2"/2 ½"	460 mm	85 mm	55 mm
B600 Slim	Narrow mouth	13 - 25 m³/h	2"/2 ½"	665 mm	85 mm	55 mm
B400 Ultimate	High water level	6 - 10 m³/h	2"/2 ½"	335 mm	85 mm	30 mm
B500 Ultimate	High water level	7 - 14 m³/h	2"/2 ½"	460 mm	85 mm	30 mm
B600 Ultimate	High water level	13 - 25 m³/h	2"/2 ½"	665 mm	85 mm	30 mm

INLET NOZZLES / WALL DUCTS

**FOR THE RIGHT FLOW.
INLET NOZZLES FOR ALL
TYPES OF POOLS.**

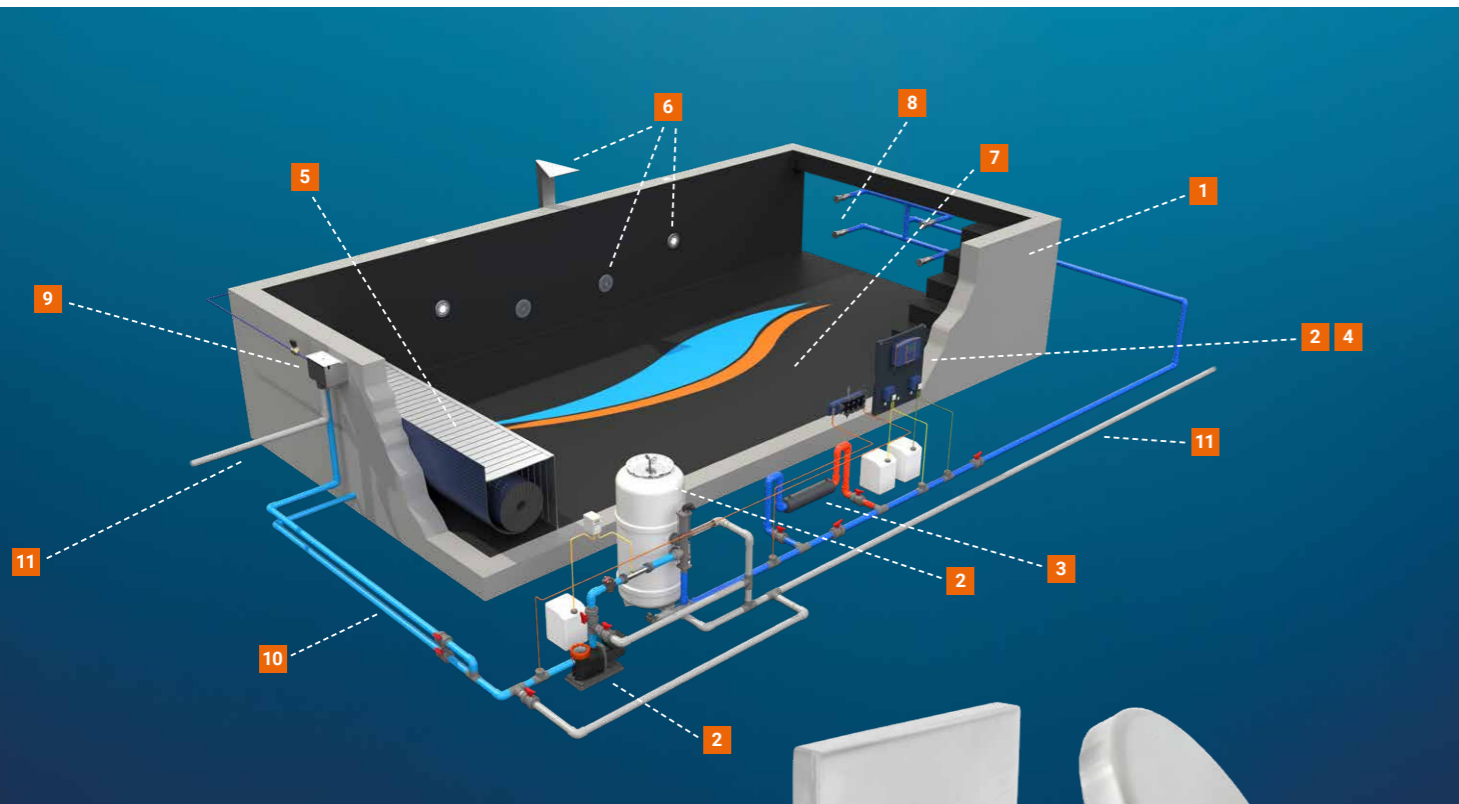
Installing the right quantity and size of inlet nozzles in the right places enables the supply of water into the pool and ensures flawless flow in your swimming pool. This virtually excludes the risk of infection for pool visitors. The holes according to DIN EN 16582 standard, with a size of <math><8\text{mm}</math> (x4), also protect from injuries.

BEHNCKE inlet nozzles are available for all pool types with or without flanges. All models come in a choice of round or CUBE Line design variants.

BEHNCKE inlet nozzles are small but essential details in the construction of swimming pools.



BEHNCKE skimmer pool Hydraulic scheme



- 1 Pool construction
- 2 Water treatment
- 3 Pool heating
- 4 Control system
- 5 Cover
- 6 Attractions / Light
- 7 Pool cleaning
- 8 Stainless steel installation parts
- 9 Skimmer with fresh water replenishment
- 10 Piping with change-over valves
- 11 Safety overflow / channel connection



WALL DUCTS

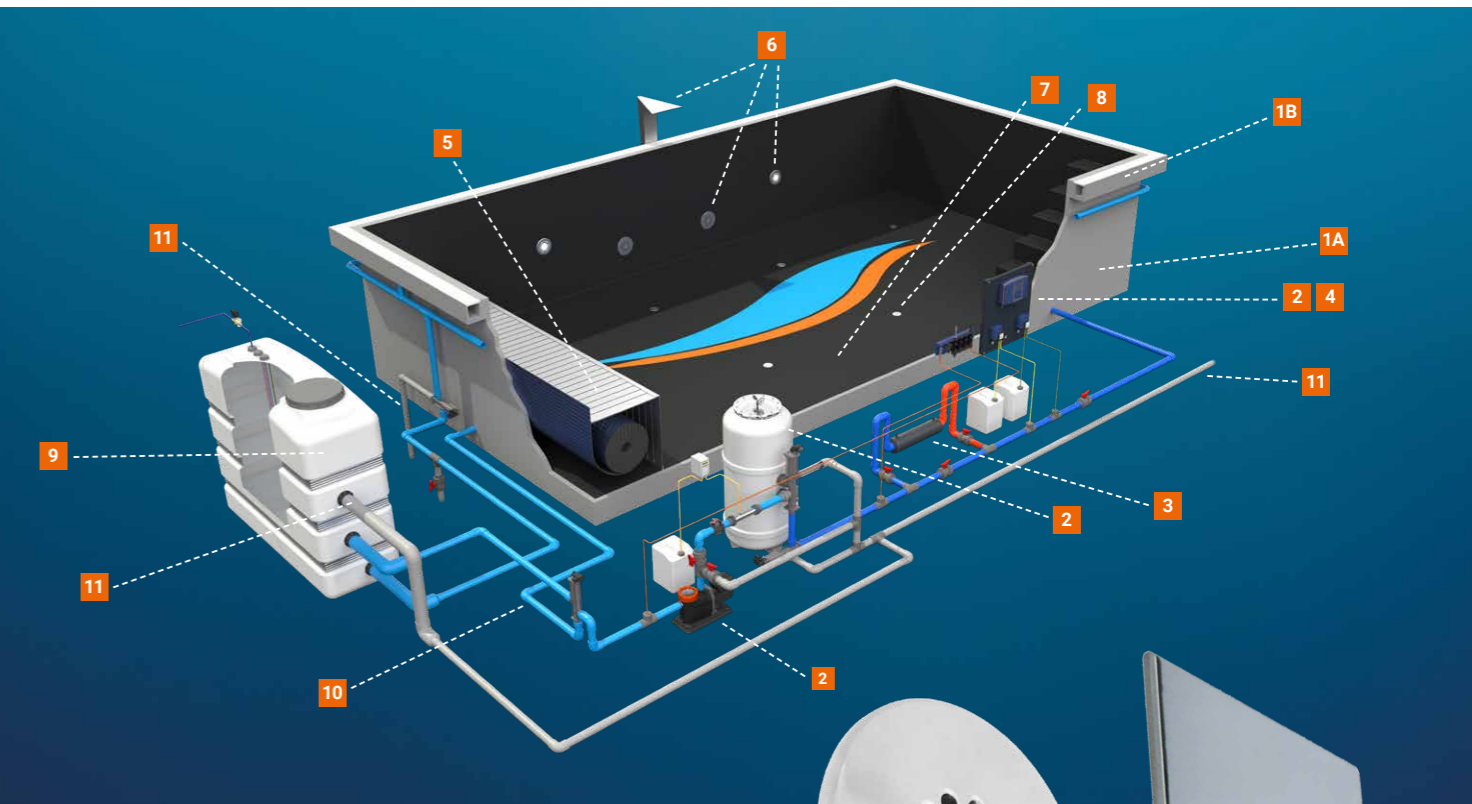
**Water transit – but safely!
With permanent sealing.**

Wall ducts connect inlet nozzle, piping and filter system. Integrated grounding ensure additional safety.

Stainless steel for the wall duct guarantees long service life.



BEHNCKE overflow pool Hydraulic scheme



- 1 A) Pool construction
B) Overflow channel system
- 2 Water treatment
- 3 Pool heating
- 4 Control system
- 5 Cover
- 6 Attractions / Light
- 7 Pool cleaning
- 8 Stainless steel installation parts
- 9 Overflow water tank with fresh water replenishment
- 10 Piping with change-over valves
- 11 Safety overflow / channel connection / gutter cleanin



VOLUME FLOW Inlet nozzles

Ball diameter (mm)	Volume flow (m³/h) at 4 mps	Volume flow (m³/h) at 5 mps
1 x 7.9	1	1.25
2 x 7.9	2	2.5
3 x 7.9	3	3.75
4 x 7.9	4	5

Pressure loss approx. 0.03 bar at 4mps and 0.04 bar at 5mps

FLOOR DRAINS

STYLISH AND SAFE – DESIGN HIGHLIGHTS ON THE POOL FLOOR FOR OPTIMUM POOL HYDRAULICS.

BEHNCKE skimmers and BEHNCKE floor drains perfectly team up. They can manage the water discharge in any swimming pool.

In addition, the floor drain improves water circulation and water quality. The floor drain ensures easy removal of the entire pool water and offers the possibility to reduce the pool water in winter to your chosen level.

The floor drains type 150 (at 3.0 m³/h volume flow), type 190 (at 4.5 m³/h volume flow) and type public (at 14.5 m³/h volume flow) have passed the hair trap test (according to DIN EN 16582).



FLOOR DRAINS

STANDARD

Niche Type 150 / 190
Cover round 2-piece



Niche Type 150 / 190
CUBE 2-piece



HAIR CATCHING SAFE

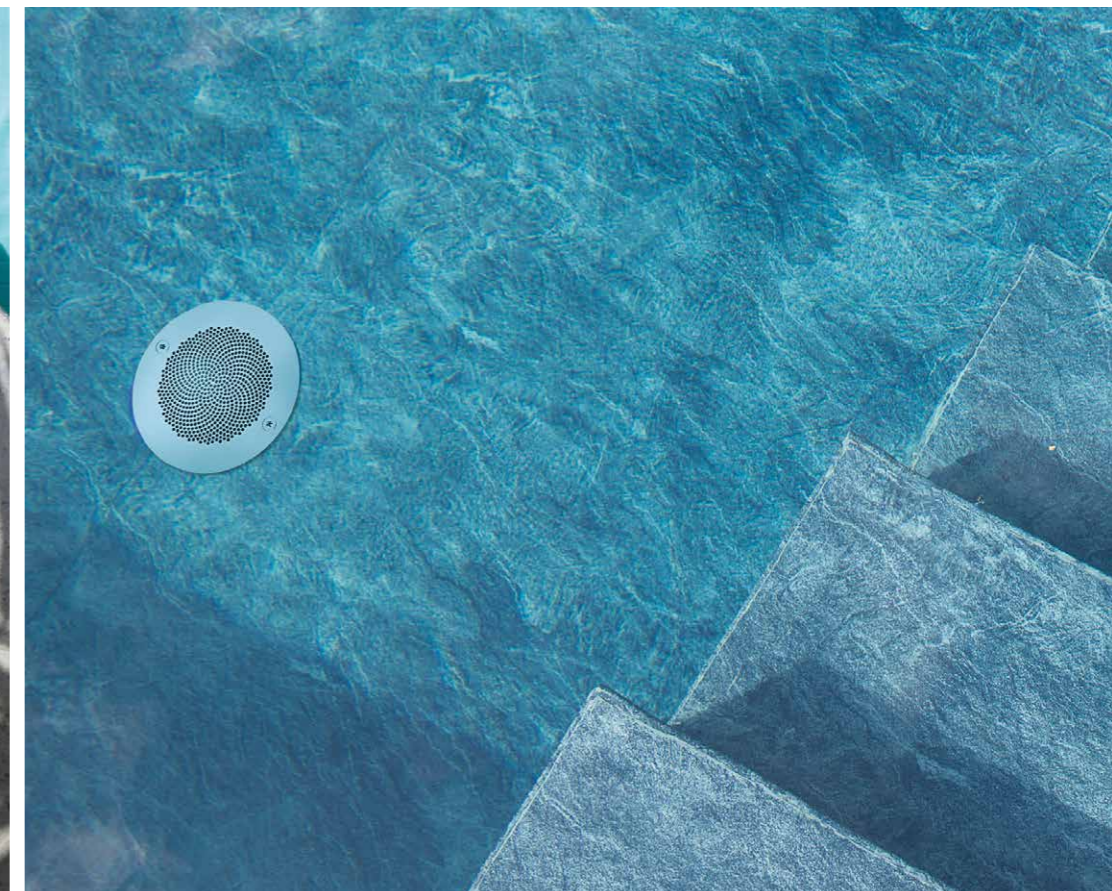
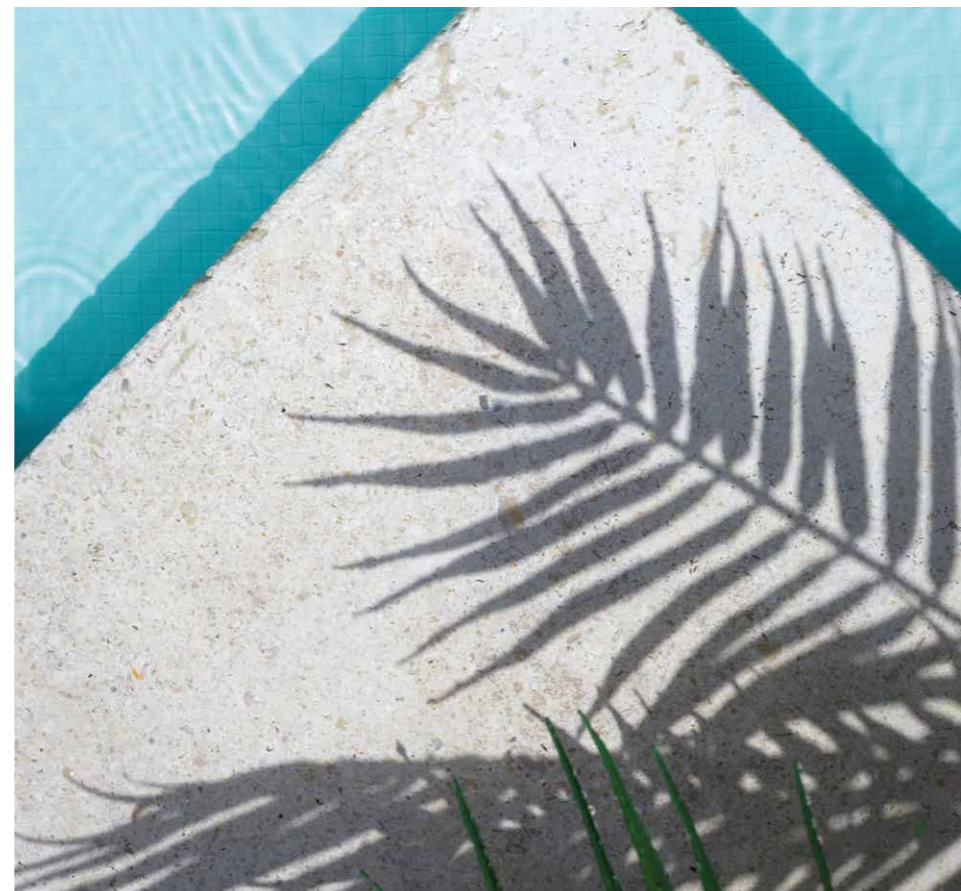
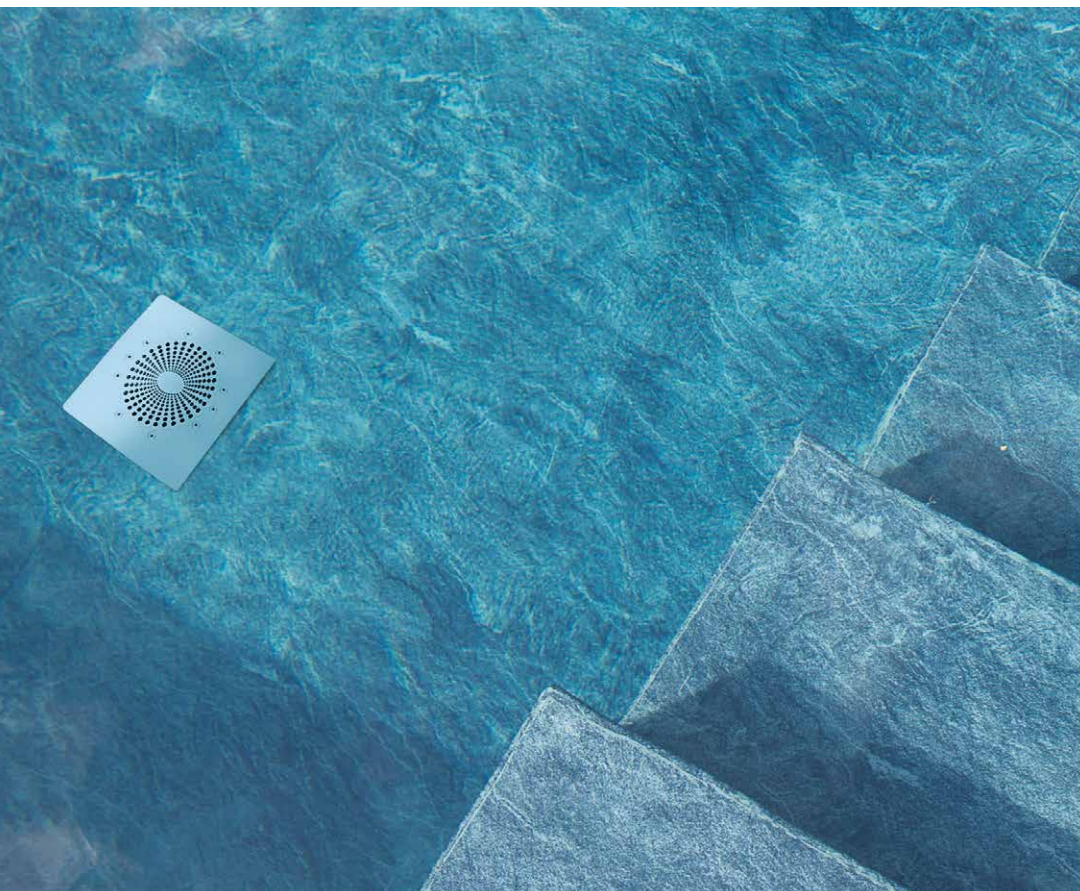
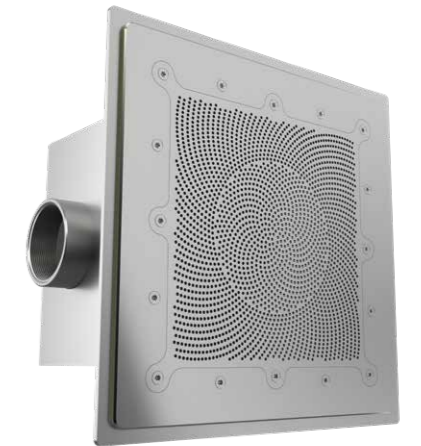
Niche Type 150
(downward outgoing)
Cover round
(Hair catching safe)



Niche Type 190
Cover round
(Hair catching safe)



Niche Public
Cover CUBE
(Hair catching safe)





Choose your light colour during pool installation (Mono / single-colour lighting)

All BEHNCKE underwater spotlights have the same RGBW LEDs as the spotlights with fixed colours. You only need to choose the light colour during installation, when the electronic system is connected. Do you want to be able to change the colour? Our RGBW Upgrade Kit helps you to easily transform your spotlight into a DMX-controlled multi-colour RGBW underwater spotlight.



Model tested for international safety standard for underwater lighting

The underwater lighting models by BEHNCKE demonstrably meet the international safety standard for underwater lighting, IEC EN 60598-2-18. Testing included electrical safety (SELV), waterproofness (IPX8/IP68), insulation class (III), impact resistance, mechanical strength, resistance to high pressure, thermal protection and fire safety.



Fast return on investment (after approx. 1 or 2 years)

Our clever design, the latest developments in LED technology and unique activation features make the BEHNCKE underwater spotlights very efficient. When replacing traditional halogen lamps with comparable luminosity, the purchase pays for itself after about 1-2 years.



No loss of LED capacity with multi-colour underwater spotlights (RGBW lighting)

Intelligent Power Control (IPC) was developed for RGBW lighting. IPC always uses the full LED capacity. A constant lighting output ideally illuminates your swimming pool, regardless of the light colour. Without IPC, some of the capacity of the RGBW lamp is lost. Depending on the chosen light colour, this loss can amount to up to 75 %.



Picture/source: EVA Optic B.V.

UNDERWATER SPOTLIGHTS

**SO ILLUMINATING.
SET YOUR POOL IN THE
RIGHT LIGHT.
ENDLESS DESIGN OPTIONS.**

Light off, spot on: a swimming pool without the proper lighting is simply not complete. BEHNCKE delivers long-lasting premium quality, entirely made in Europe.

Besides the traditional PAR 56 light we offer the economical BEHNCKE LED. This has a manufacturer's warranty of 4 years and is available in the versions Daylight White, Warm White and in the RGBW version used for any size of pool.

The range of lights offers the right model for every pool size and also in the case of renovations.



UNDERWATER SPOTLIGHTS

LED – ENERGY-EFFICIENT

EVA Q2 THE LITTLE



BEHNCKE LED THE CLEVER / HIGH END SOLUTION



TRADITIONAL

PAR 56 THE TRADITIONAL



HIGH QUALITY DESIGN

The stainless steel installation nice as well as the and the matching stainless steel cover protect against external impacts and thus ensure the longevity of the light.

The light combined with the stainless steel cover impresses further with its high-quality design.

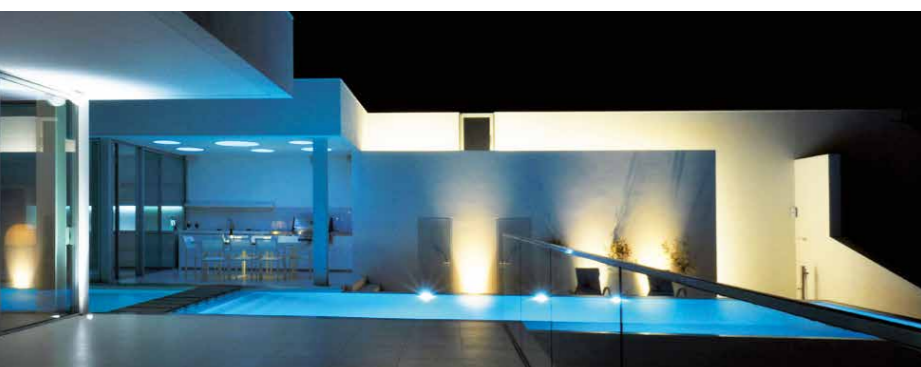
EXTENDED WARRANTY

All LED models (except PAR 56) are delivered with a 4-year manufacturer warranty.

SPECIFICATIONS

Underwater spotlights

Type	Driver/colour versions	IP protection class	Max. energy consumption	Cable length	Luminous flux		Beam angle	Surface	Diameter of lamp excl. glare	Guarantee/warranty
					6500 K	2270 K				
EVA Q2	Mono-white cold/warm RGBW (DMX)	IP68/IPX8	10 W	10 m	1350 lm	1150 lm	Multinagle Beam		54 mm	4-year guarantee with min. 3.5 m cable
BEHNCKE LED Clever solution	0 – 10 VDC (mono) cold/warm RGBW (DMX)	IP68/IPX8	25 W	10 m	3375 lm	2875 lm	Wide Beam	Satin Cover	118 mm	4-year guarantee with min. 3.5 m cable, 30 metre on request
BEHNCKE LED High end solution	0 – 10 VDC (mono) cold/warm RGBW (DMX)	IP68/IPX8	50 W	10 m	6750 lm	5750 lm	Wide Beam	Microprisma Cover	118 mm	4-year guarantee with min. 3.5 m cable, 30 metre on request
PAR 56	Mono-white cold/ RGBW (DMX)	IP68/IPX8	13 W/16 W-RGBW	2.5 m	1450 lm/ 600 lm		Multinagle Beam		176 mm	2-year warranty



HIGH-QUALITY ACCESSORIES

**THROUGHOUT
AND RAFFINED – OFFERS
MAXIMUM COMFORT
FOR THE POOL OWNER.**

The filling aid for the AFM (filter material) makes the filling of the filter very easy. The product is placed on the filter opening. This aid is provided with a tip which allows e. g. the AFM bag to tear open and thus the filter material trickles into the filter.

The BEHNCKE stainless steel air bubble plate offers the swimming pool owner a plus in bathing pleasure. The plate provides bubbling fun in the water and transforms the pool with its massaging effect into a wellness oasis.



FILLING AID

STAINLESS STEEL FILLING AID FOR THE BEHNCKE³ FILTER SERIES

Easy filling of the filter material.

Stainless steel filling aid for filter material. Fits all BEHNCKE³ filters. The product is placed on the filter opening provided with a tip. It is applicable to torn open the media bags e. g.. AFM and thus the filter material trickles into the filter. With this filling aid the the muddy water funnel is covered and the stud bolts is prevented of damage and contamination.



Watch here our video on the correct application



**WE RECOMMEND AS FILTER MATERIAL:
AFM FROM DRYDEN AQUA**

Self-disinfecting surface:
Resistant to bacterial growth

Hydrophobic surface:
Filters down to 1 micron

Greatly increased surface area:
For better adsorption and filtration



AIR JETS

BEAUTIFUL AIR JET NOZZLES AND AIR BUBBLE PLATES MADE OF STAINLESS STEEL

With these high-quality products, you can transform your pool into an oasis of well-being.

Who doesn't find it pleasant to lie on the water, to drift and to swim through the bubbles? With the BEHNCKE air bubblers you have fun and massage in your own pool

AIR JET NOZZLE „S“



Wall duct 1 1/2"



Air jet nozzle S
Air jet nozzle D100 connection R 1 1/2"

AIR BUBBLE PLATES „M“



NicheType 190

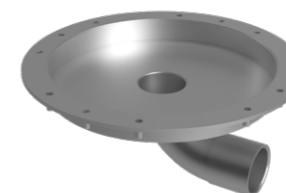


Air bubble plate M*
Cover round + Q2 LED



Air bubble plate M*
Cover CUBE + Q2 LED

AIR BUBBLE PLATES „L“



Built-in niche, air bubbler
90° outlet 2", IG packed



Air bubble plate L*
2-piece round cover for air bubbler with seal and screws, packed



Air bubble plate L*
2-piece CUBE cover for air bubbler with seal and screws, packed

* Illustration shows cover with light. All covers are also available without light.



■ Water treatment ■ Integrated parts ■ Pool heating ■ Dehumidification ■ Pool cleaning ■ Pool + accessories ■ PVC fittings + pipes

Your local retailer